



Thermocouple to dive

Element Fe-CuNi oder NiCr-Ni
Element not to exchange
special Version to exchange it's possible
Transmitter mounting it's possible see Sheet 18.1

Connecting Head Form B at Aluminium to DIN 43729
With M 20 x 1,5 Cable-Screw

Connecting Please look Sheet 19.20

Mechanical connecting

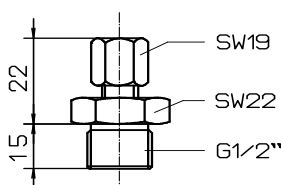
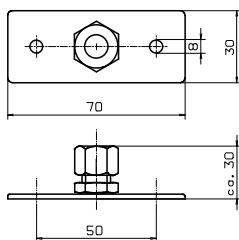
Flange

Insert Screw

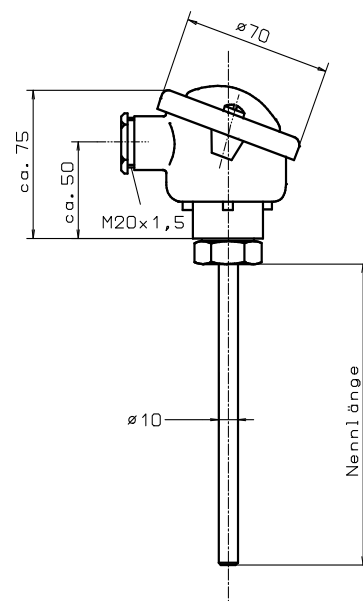
Order-No. 0.41.01.01

Order-No. 0.41.01.02

More Applications
please see Chapter 18



Steel coated



Execution	Pipe	10 x 1 Ø	Material 1.4541 (V2A) Stainless Steel X6 CrNiTi 1810				
Working Temperature in °C	Length in mm	Wight in Kg	Order-No. 1 x Fe-CuNi	Order-No. 2 x Fe-CuNi	Order-No. 1 x NiCr-Ni	Order-No. 2 x NiCr-Ni	Del.-Time
600	180	0,4	1.13.04.11	1.13.04.12	2.13.04.11	2.13.04.12	Short term, by appointment
	250	0,5	1.13.04.21	1.13.04.22	2.13.04.21	2.13.04.22	
	300	0,6	1.13.04.31	1.13.04.32	2.13.04.31	2.13.04.32	
	400	0,7	1.13.04.41	1.13.04.42	2.13.04.41	2.13.04.42	
	500	0,9	1.13.04.51	1.13.04.52	2.13.04.51	2.13.04.52	

Execution	Pipe	10 x 1 Ø	Material 1.4571 (V4A) Stainless Steel X6 CrNiMoTi 17122				
Working Temperature in °C	Length in mm	Wight in Kg	Order-No. 1 x Fe-CuNi	Order-No. 2 x Fe-CuNi	Order-No. 1 x NiCr-Ni	Order-No. 2 x NiCr-Ni	Del.-Time
800	180	0,4	1.13.20.11	1.13.20.12	2.13.20.11	2.13.20.12	Short term, by appointment
	250	0,5	1.13.20.21	1.13.20.22	2.13.20.21	2.13.20.22	
	300	0,6	1.13.20.31	1.13.20.32	2.13.20.31	2.13.20.32	
	400	0,7	1.13.20.41	1.13.20.42	2.13.20.41	2.13.20.42	
	500	0,9	1.13.20.51	1.13.20.52	2.13.20.51	2.13.20.52	

Execution	Schutzrohr 10 x 2,5 Ø	Material 1.4541 (V2A) Stainless Steel I X6 CrNiTi 1810					
Working Temperature in °C	Length in mm	Wight in Kg	Order-No. 1 x Fe-CuNi	Order-No. 2 x Fe-CuNi	Order-No. 1 x NiCr-Ni	Order-No. 2 x NiCr-Ni	Del.-Time
600	400	0,8	1.13.04.61	1.13.04.62	2.13.04.61	2.13.04.62	Short term, by appointment
	500	0,9	1.13.04.71	1.13.04.72	2.13.04.71	2.13.04.72	
	710	1,1	1.13.04.81	1.13.04.82	2.13.04.81	2.13.04.82	
	1000	1,3	1.13.04.91	1.13.04.92	2.13.04.91	2.13.04.92	

Execution	Pipe	10 x 2,5 Ø	Material 1.4762 X10 CrAl 24				
Working Temperature in °C	Length in mm	Wight in Kg	Order-No. 1 x Fe-CuNi	Order-No. 2 x Fe-CuNi	Order-No. 1 x NiCr-Ni	Order-No. 2 x NiCr-Ni	Del.-Time
800 (NiCr-Ni)	400	0,8	1.13.22.11	1.13.22.12	2.13.22.11	2.13.22.12	Short term, by appointment
	500	0,9	1.13.22.21	1.13.22.22	2.13.22.21	2.13.22.22	
	710	1,1	1.13.22.31	1.13.22.32	2.13.22.31	2.13.22.32	
	1000	1,3	1.13.22.41	1.13.22.42	2.13.22.41	2.13.22.42	